

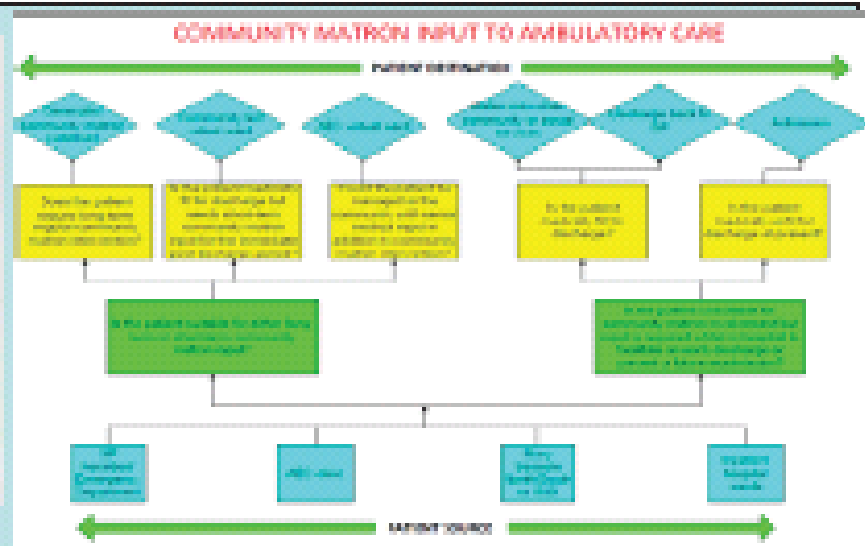
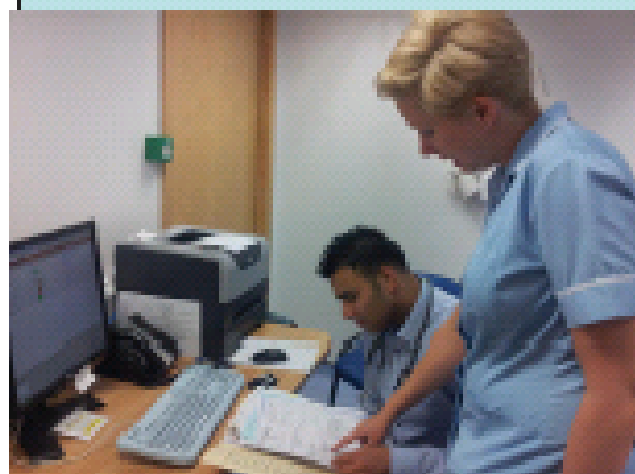
# Ambulatory Emergency Care at Whittington Hospital

## Background

The ambulatory care service is co-located to the Emergency Department and aims to deliver high quality care for patients, with senior decision making and advanced diagnostics, without the need for a hospital admission

## Tools Used

- Experience based design
- Patient pathways
- Gant charts
- AEC directory



## Improvement so far

- Patient information leaflets – general and condition specific
- DVT pathway
- Integration of community matrons and clinic staff
- Sub-waiting room
- GP referrals direct to consultant

## Challenges

- Recording and capturing data
- Getting buy-in from other specialities
- OOH number for patients
- Lack of space to see patients

## Results & Next Steps

- Having nurse cover over the weekend
- IVAB in the community
- Virtual ward
- More pathways to go live
- Promote service to GP's



**Ambulatory  
Emergency Care  
Delivery Network**

Insert Team Member names here.  
Insert Team Member names here.  
Insert Team Member names here.  
Insert Team Member names here.