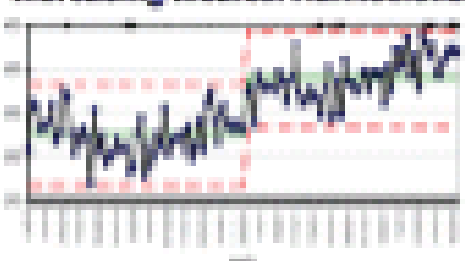


- Switched all un-differentiated medical take to the OHSU campus
- Need a different way of thinking to respond to rising emergency demand
- National drive for Ambulatory care
- Reducing patient access with short length of stay

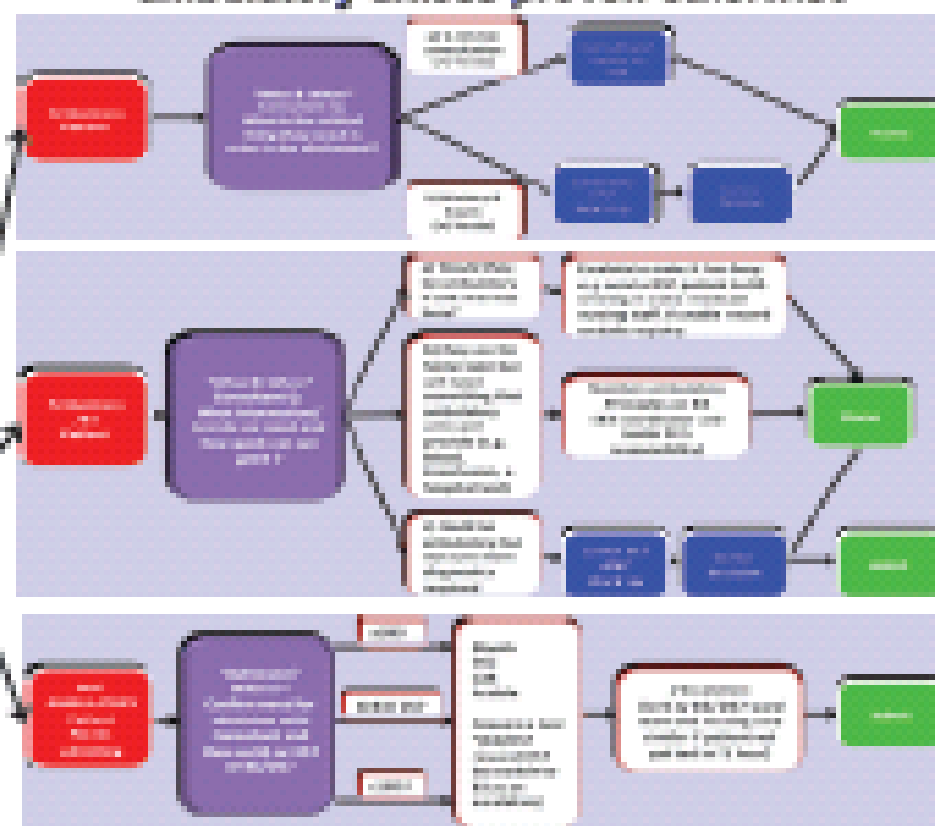
How?

- Blister For Your transformational change programme
- Ideas developed with patient engagement and staff involvement
- Short trial over a 6 month period to prove concept
- Case for funding for a longer pilot over winter 11/12: increasing the footprint and streamlining process and pathway- continuous improvement

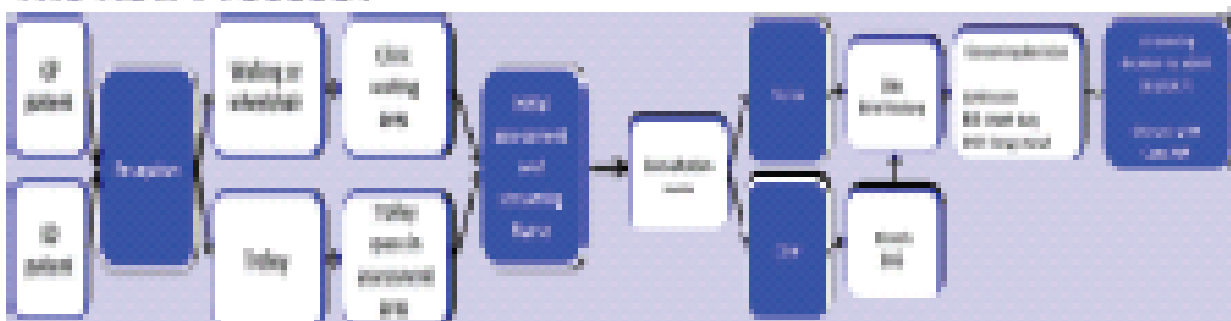
Investigating Medical Students



All patients are considered ambulatory unless proven otherwise



The New Process?

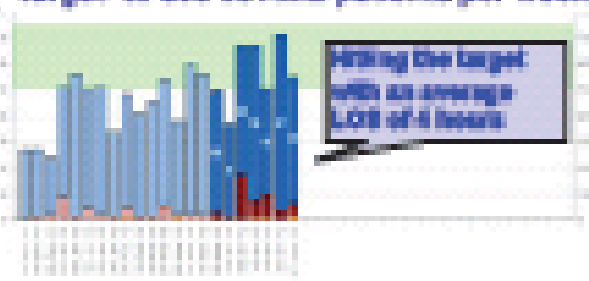


Patients arrive
(Mon-Fri 8am-10pm)

Rapid streaming process:
(All patients now seen within 15 minutes)

Knowing How We Are Doing- Every week we monitor our progress and performance- some examples:

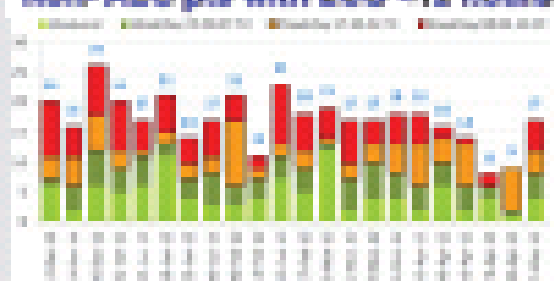
Target: to meet 50 Amb orders per week



GP Ambulatory converted to Ambulatory



Slide: ABC rule with LCB and 3 hours



Many people use
corticosteroids for
periods to control
the acute severe
asthma and
longer courses could
be needed.