

# Ambulatory Emergency Care at Plymouth Hospitals NHS Trust

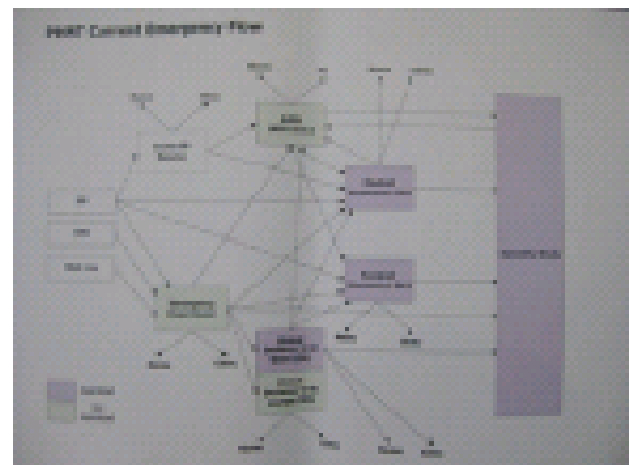
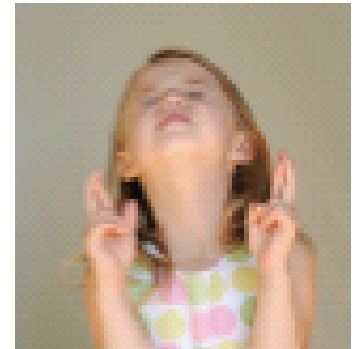
## Current state

Currently many services!

PE Pathway  
DVT clinic  
TIA Clinic  
IV ceftriaxone for  
cellulitis pathway  
HOT clinics  
All run in different  
places by different  
services

## Aim

Plymouth had many AEC  
service strands, our project  
aim is to co locate all  
ambulatory emergency  
care into one dedicated  
unit to reduce admissions  
by providing, safe and  
effective same day  
emergency care



## Our achievements

- Collaboration between Primary and Secondary care
- Knowing that we already do Ambulatory Emergency Care well
- Pushing through the plans for the dedicated unit and securing executive backing

## Challenges

- Resistance from colleagues
- Getting the environment right
- Putting medical and nursing staff in place
- Existing operational pressures
- Involving stakeholders

## Results & Next Steps

- Recruitment of nursing staff into established posts
- Mapping patient pathways and reducing delays
- Doing more Ambulatory Emergency Care
- Unit to open 1<sup>st</sup> September 2012